



COSPLAY  
GUIDE **KERRY**  
**EURDYNE**





CHARACTER

# KERRY EURODYNE

Kerry began his whirlwind musical career as the bassist of Samurai, playing alongside outspoken frontman Johnny Silverhand. After the band's demise, Kerry set out on the road to solo superstardom and crafted his own musical identity. With fame, respect, and a high-tech mansion in North Oak you'd think Kerry had it all. But even decades later, he can't help but define himself by his time spent by Johnny's side.



FULL BODY









HEAD





























CYBERWARE





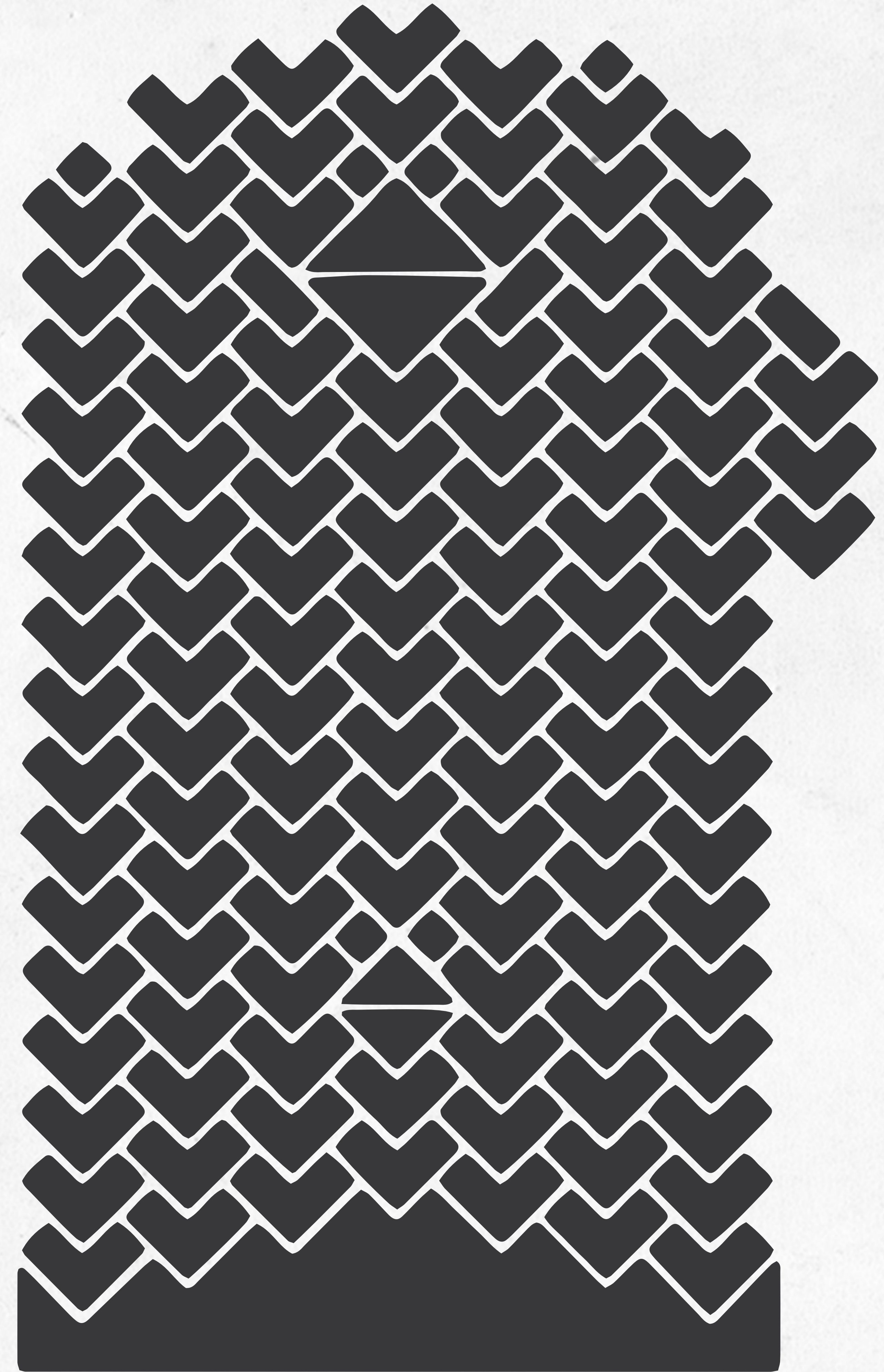








TATTOOS





TANK TOP









DESIGN



AVANTÉ  
SI PARLA MODA



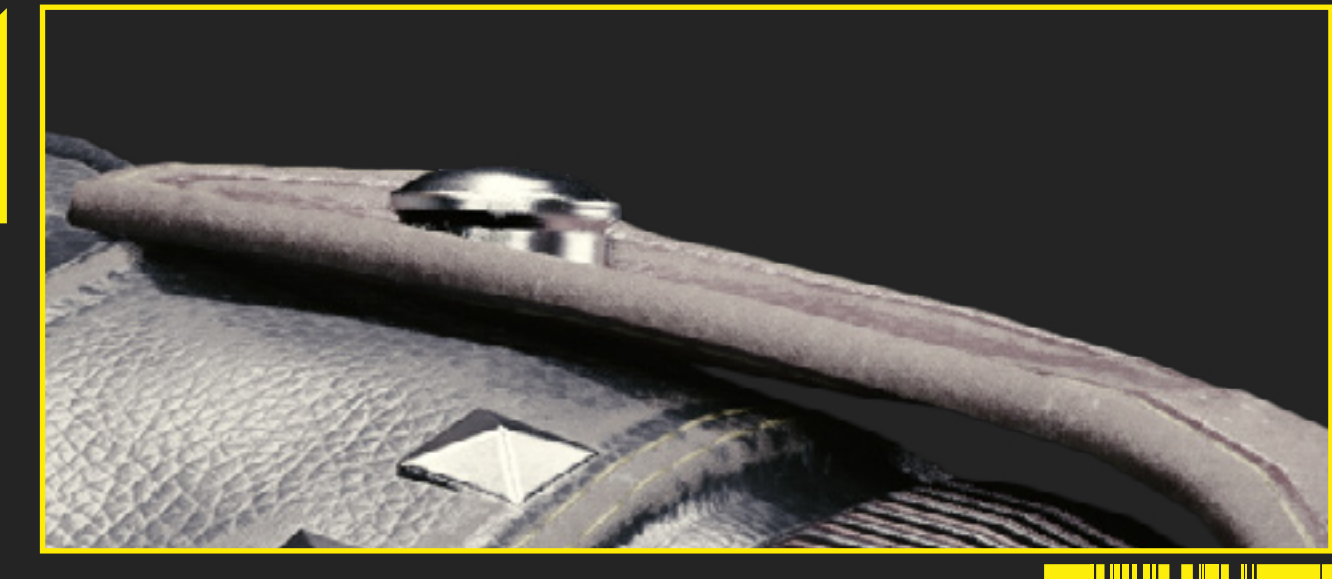
VEST













PANTS









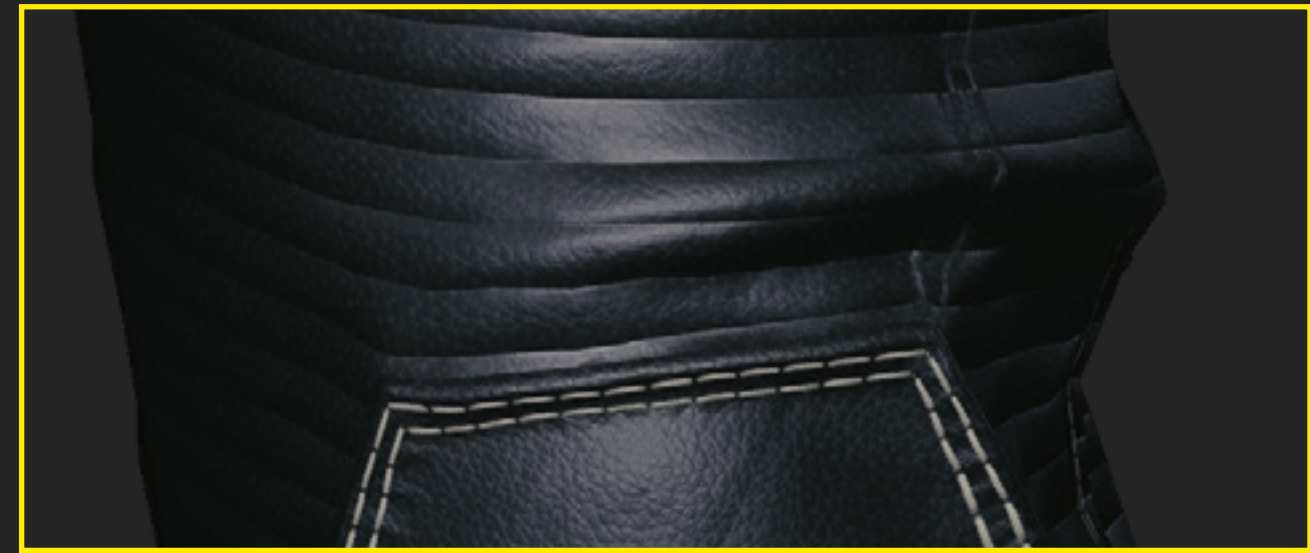
SHOES













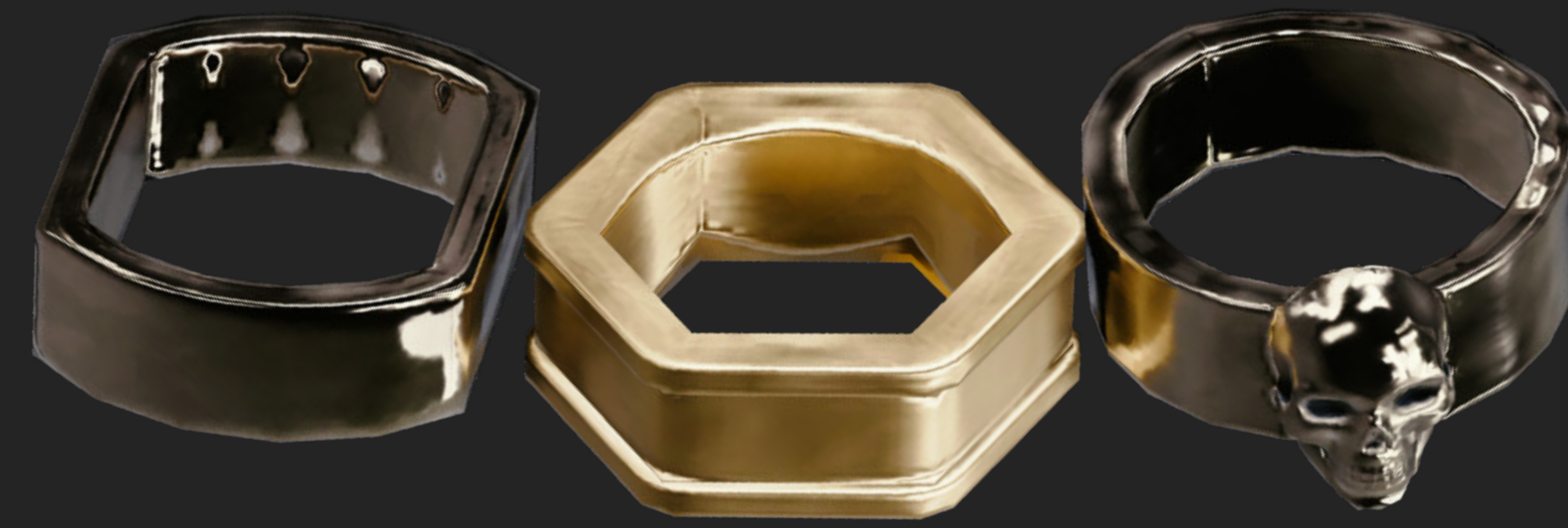
JEWELRY













## WEAPONS

# ARCHANGEL

One of the most powerful instruments in Kerry Eurodyne's repertoire, Archangel is a revolver that has been modified to be fully automatic, allowing it to spit lead with more intensity than a Samurai guitar solo. Its red-brown grip and engraved barrel ornaments add an artistic, almost classic edge; a fitting piece for a musician of Kerry's caliber.



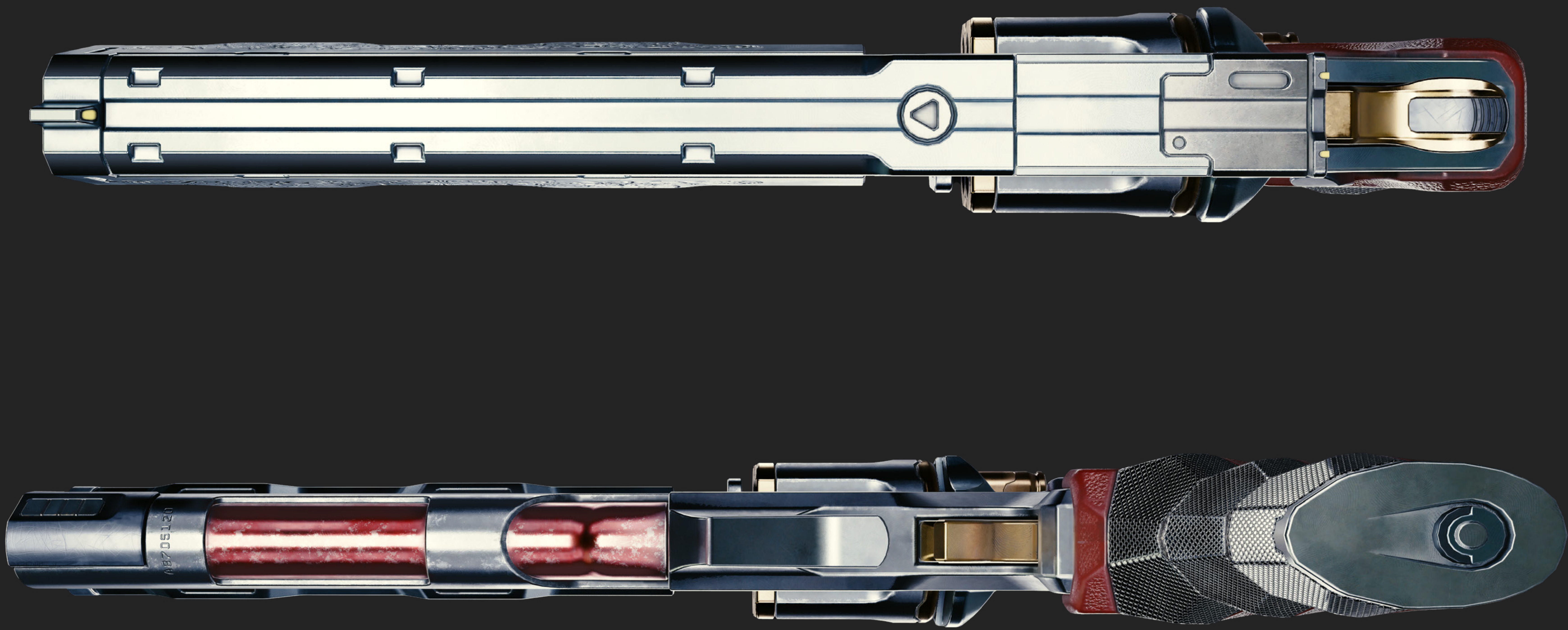


















# FAN CONTENT GUIDELINES

We really appreciate all the work that our community puts into showing their love for our games and, to support you in this, we've put together [Fan Content Guidelines](#). Please remember to follow them while creating, wearing and showcasing your cosplay. In other words:

## DO

- create cosplays inspired by our games
- show them off on your social media channels
- wear them to conventions, fairs, meet-ups, etc.

## DO NOT

- create cosplays for sale
- use your cosplays to promote other companies/products
- claim you are officially sponsored by CD PROJEKT RED
- do anything offensive or illegal while wearing your cosplay





