

COSPLAY GUIDE ✓



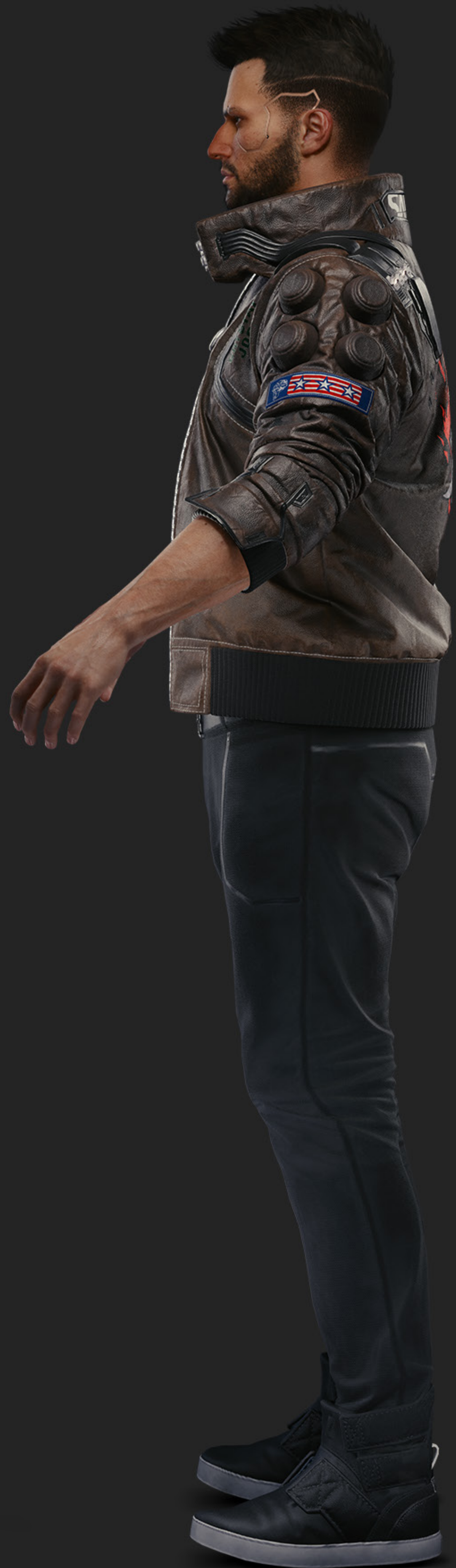
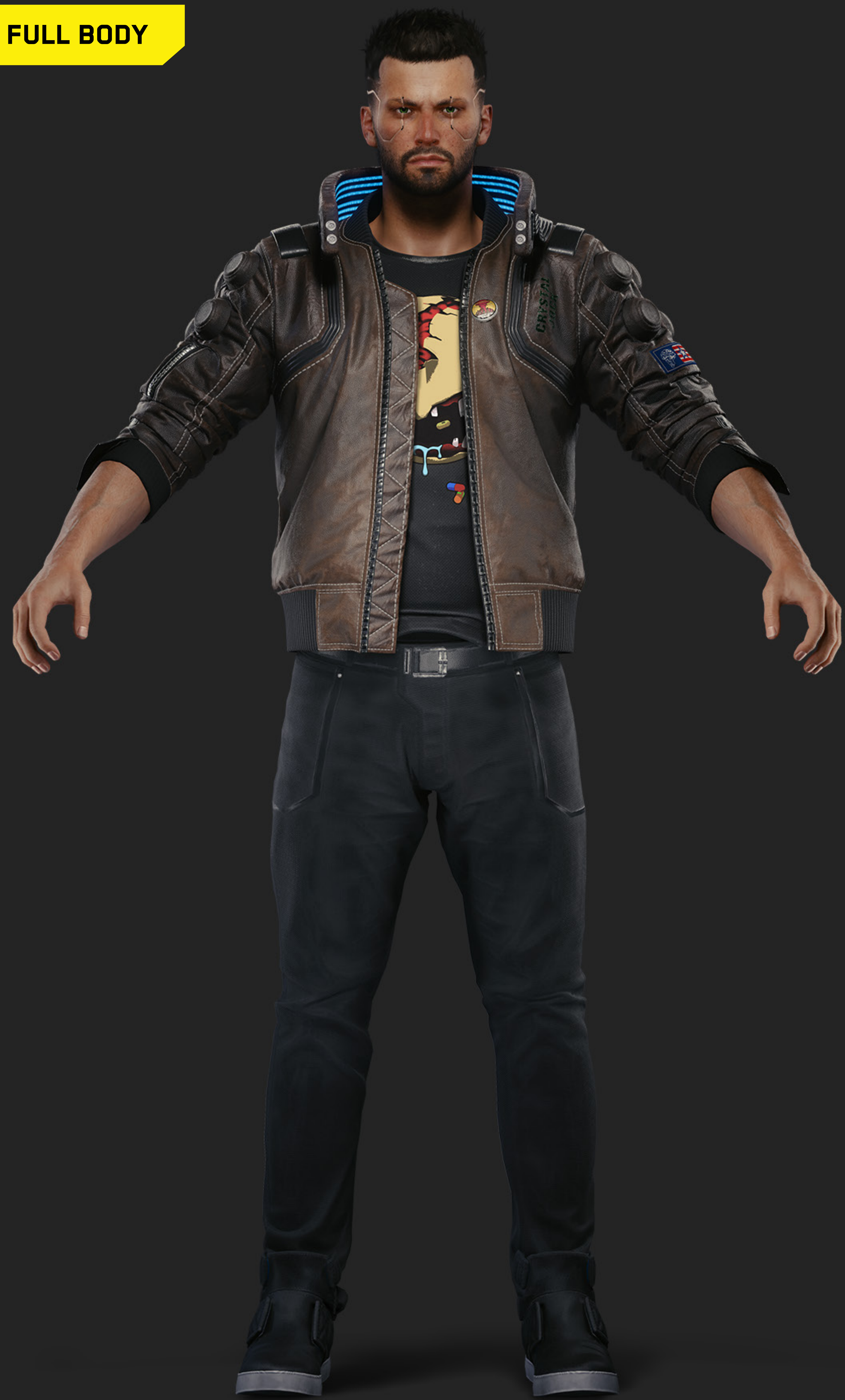


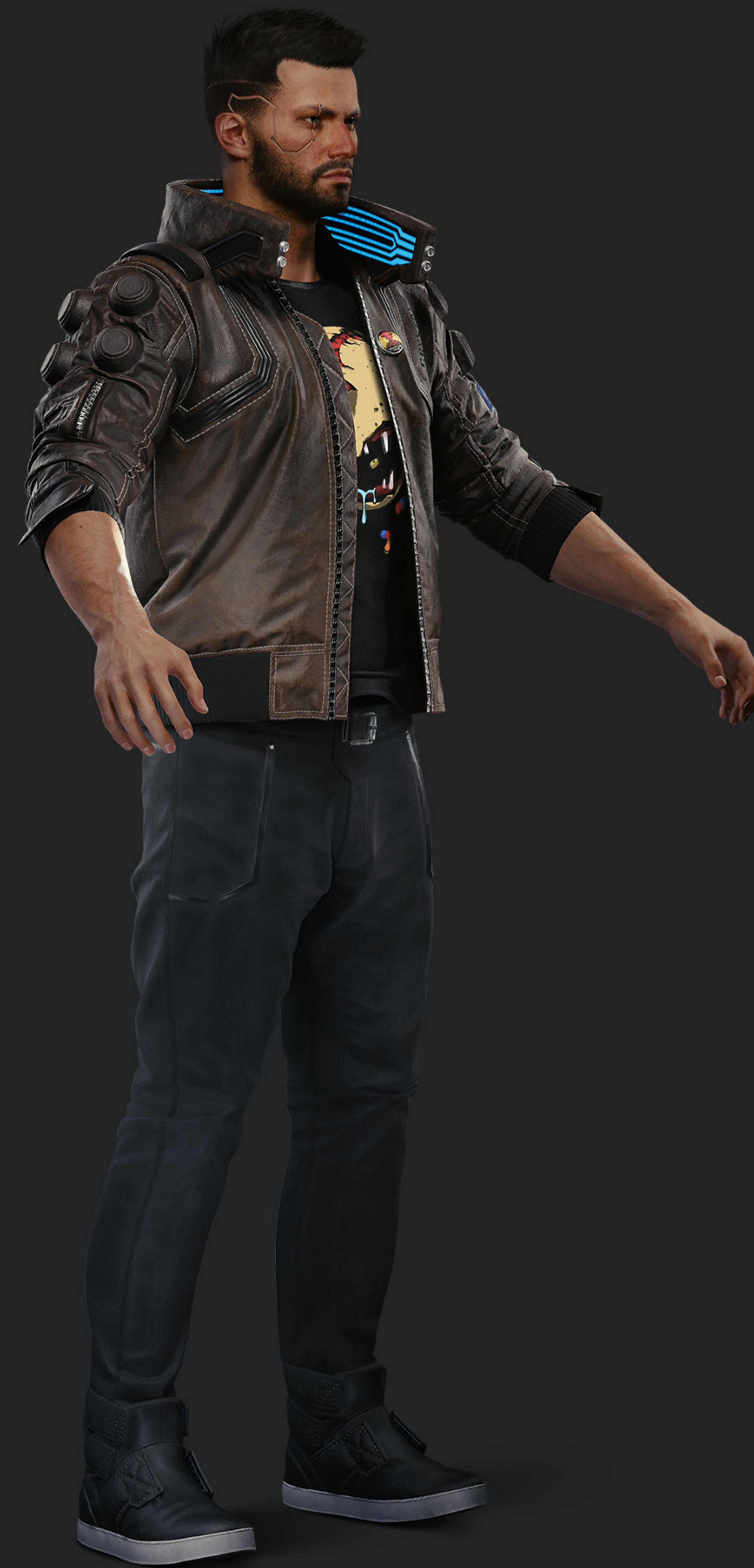
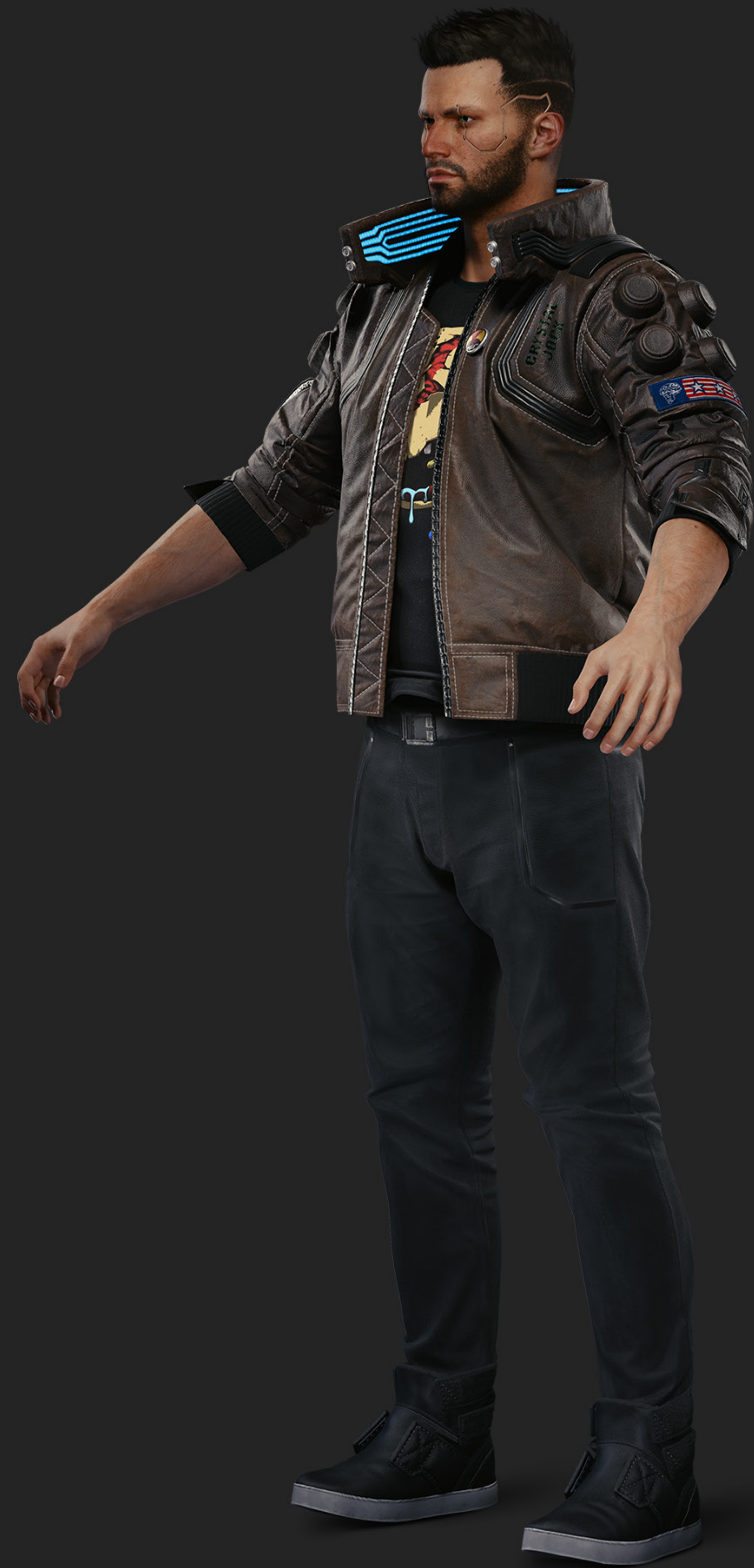
CHARACTER



A mercenary working their way up the ranks to Night City legend. Their big break comes with the Konpeki Plaza heist, but nothing goes as planned: V ends up with an experimental prototype chipped into their head, slowly overwriting their personality with that of Johnny Silverhand. V's newest mission is survival, whatever the cost.

FULL BODY





HEAD









COLLAR DETAIL









RIGHT SIDE



LEFT SIDE

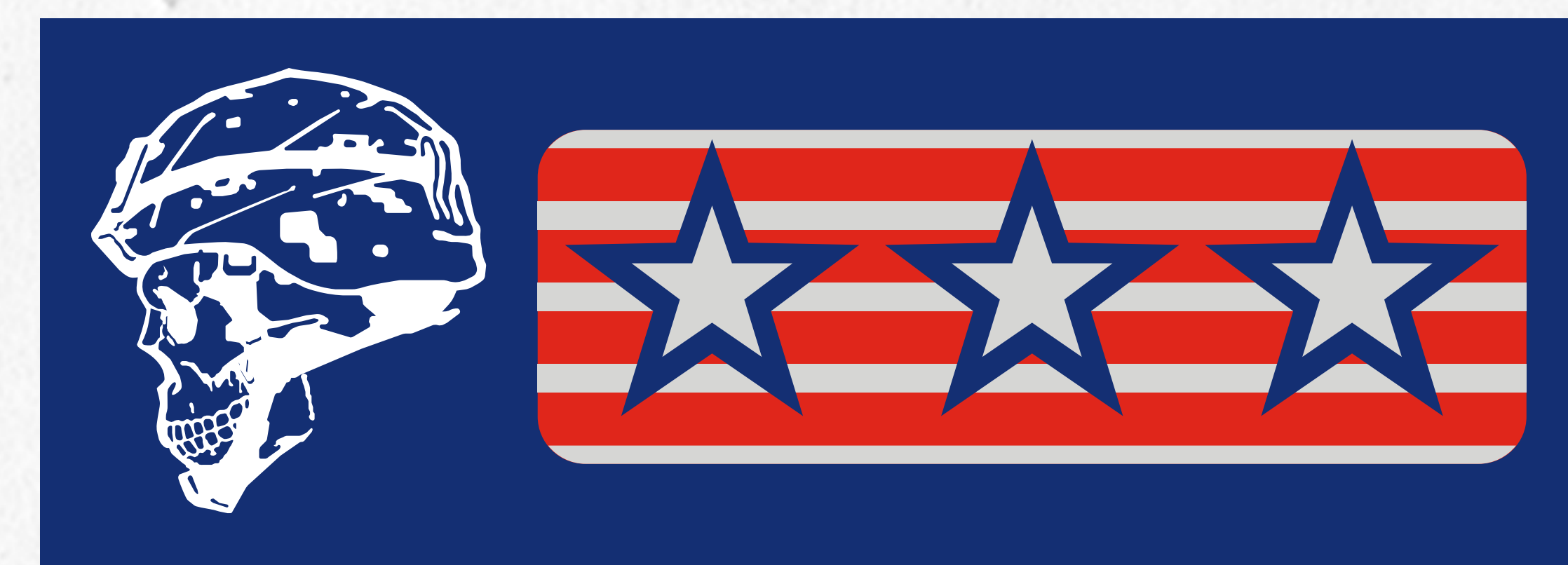




JACKET DETAILS



PATCHES AND PINS



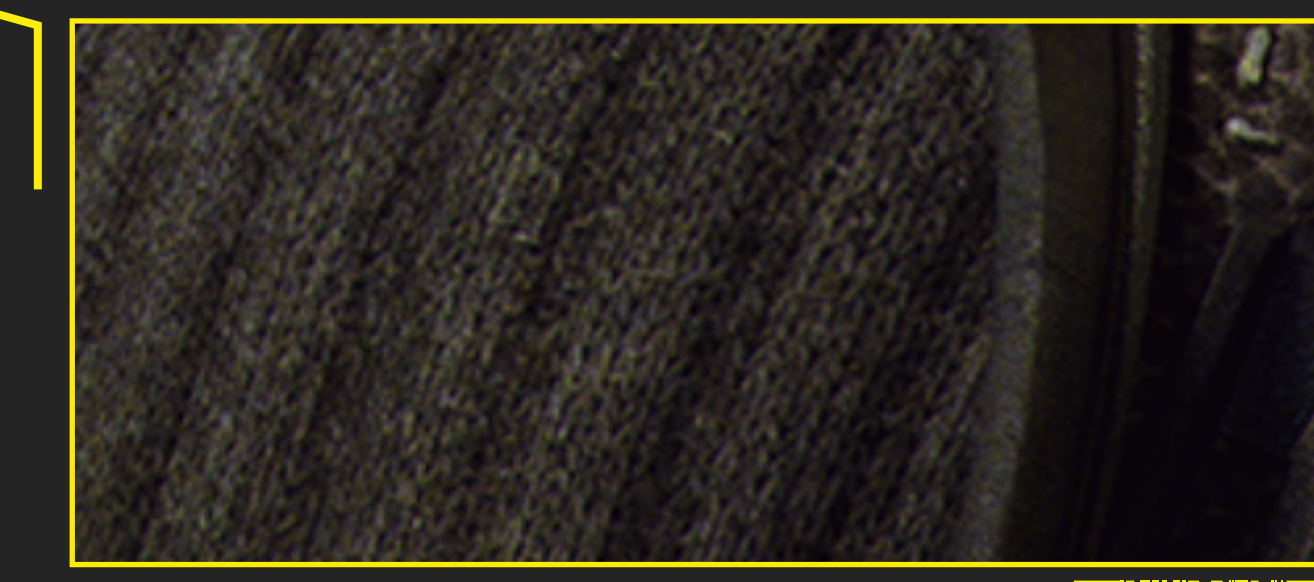
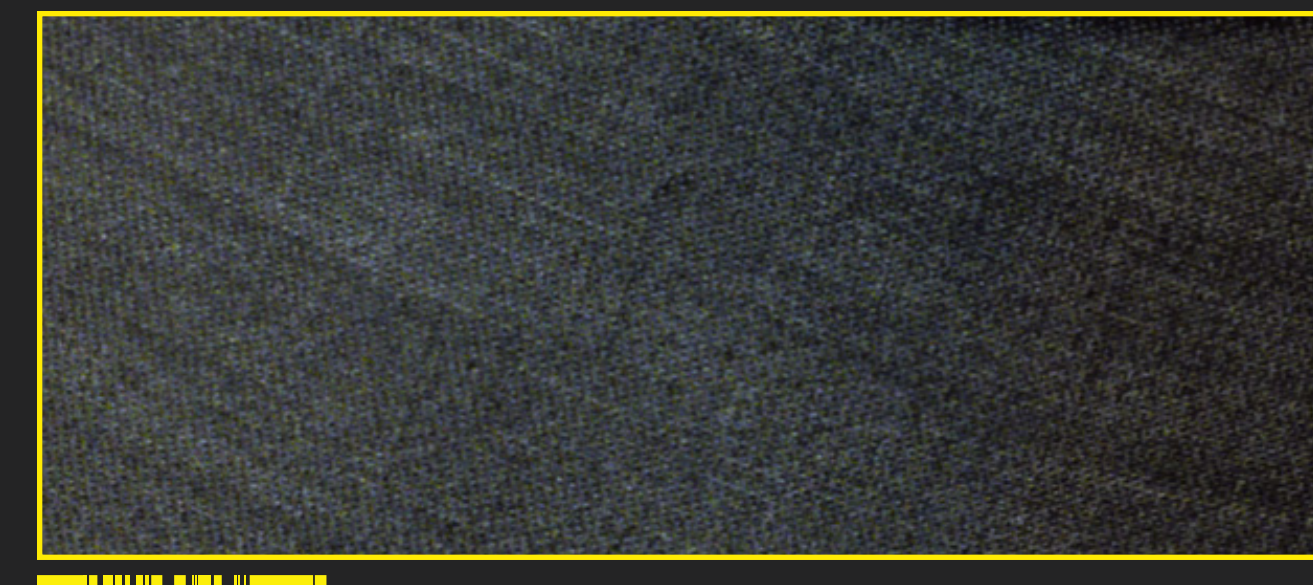
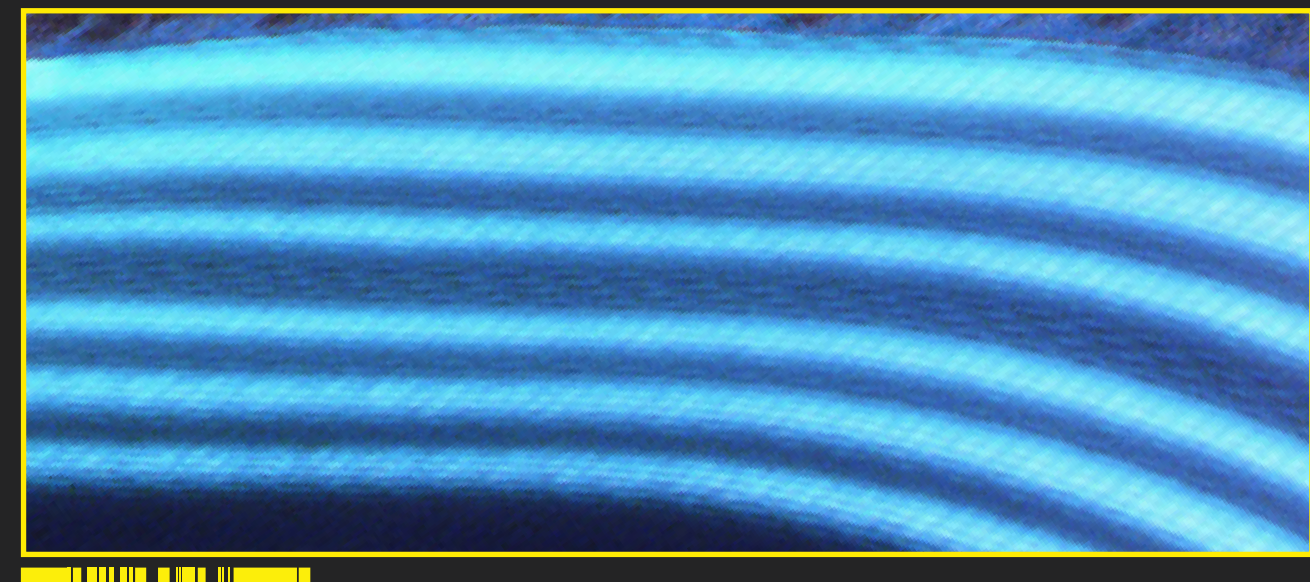
SAMURAI
SAMURAI

WITHOUT JACKET

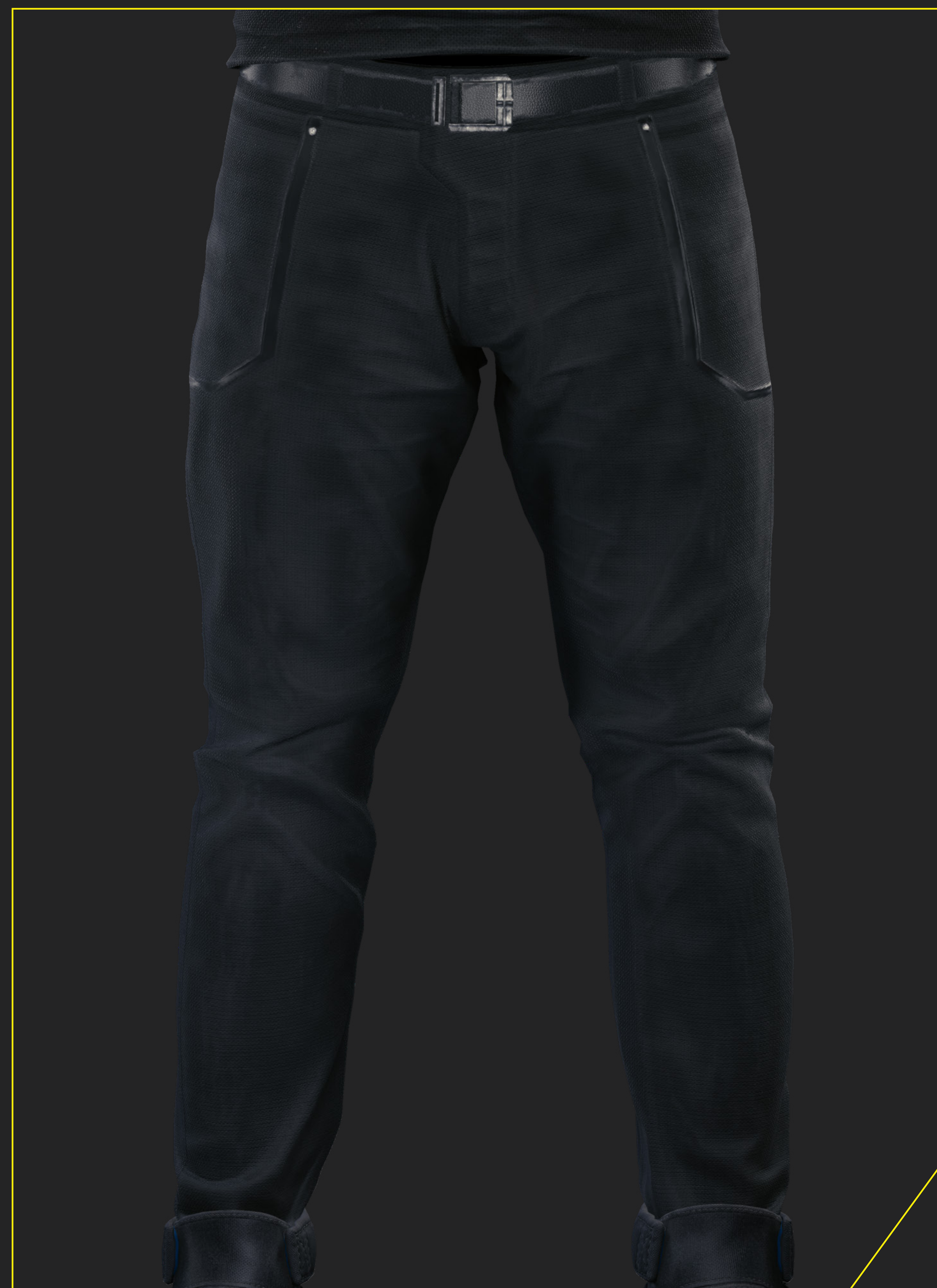
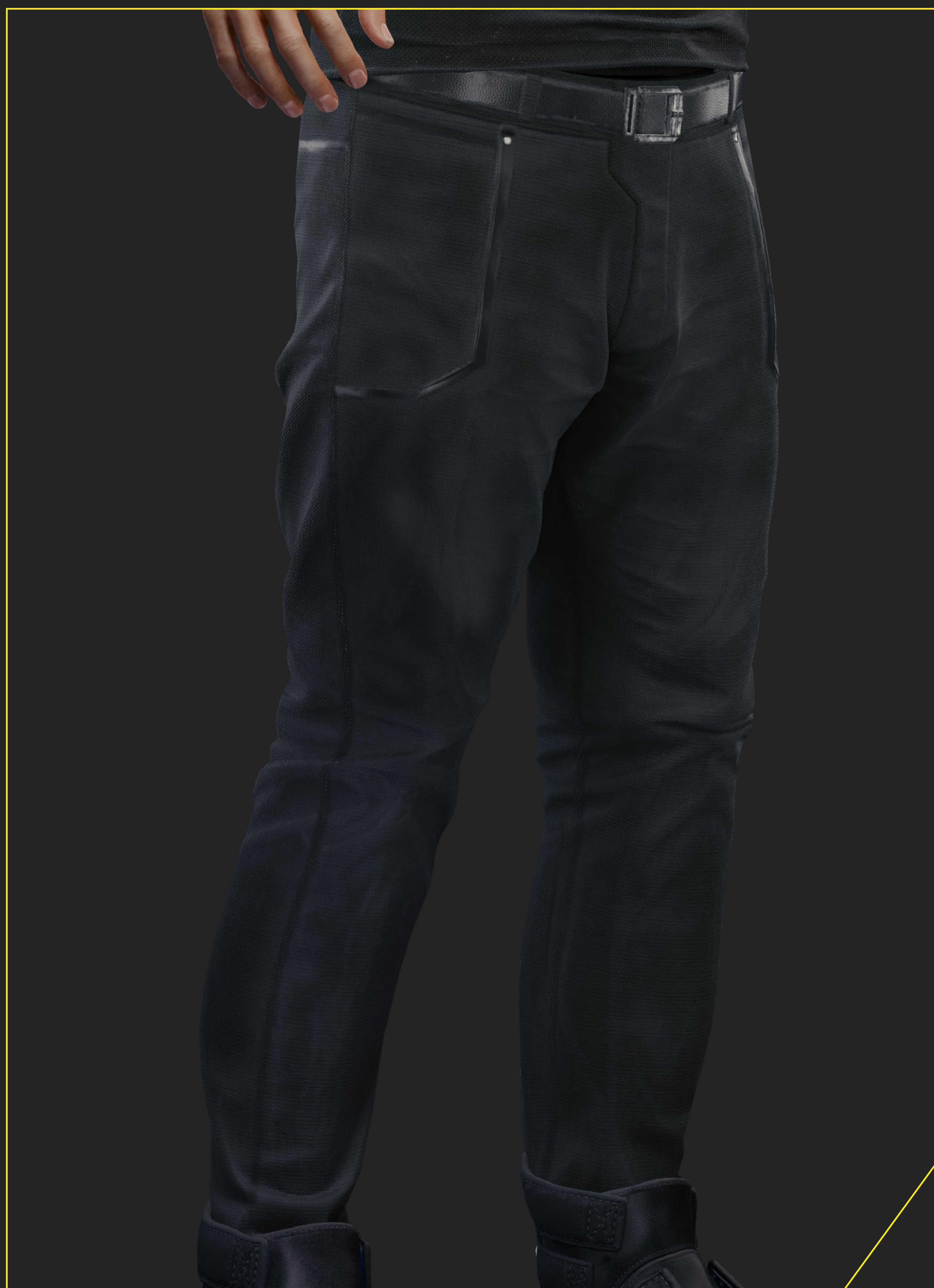


T-SHIRT DESIGN



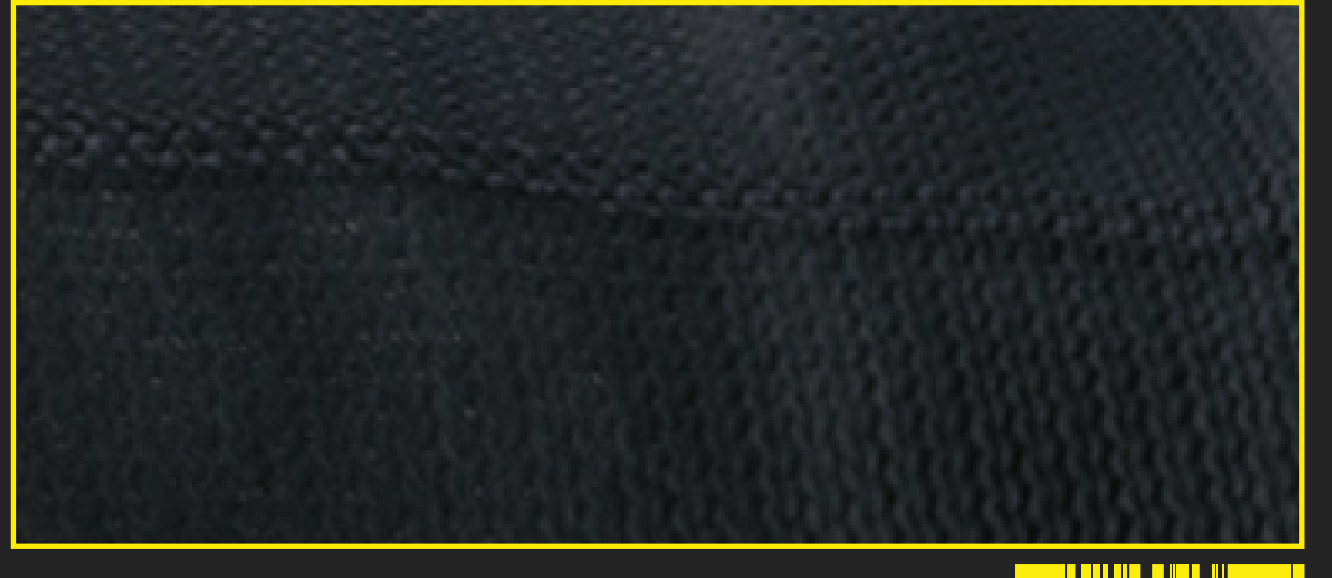


PANTS



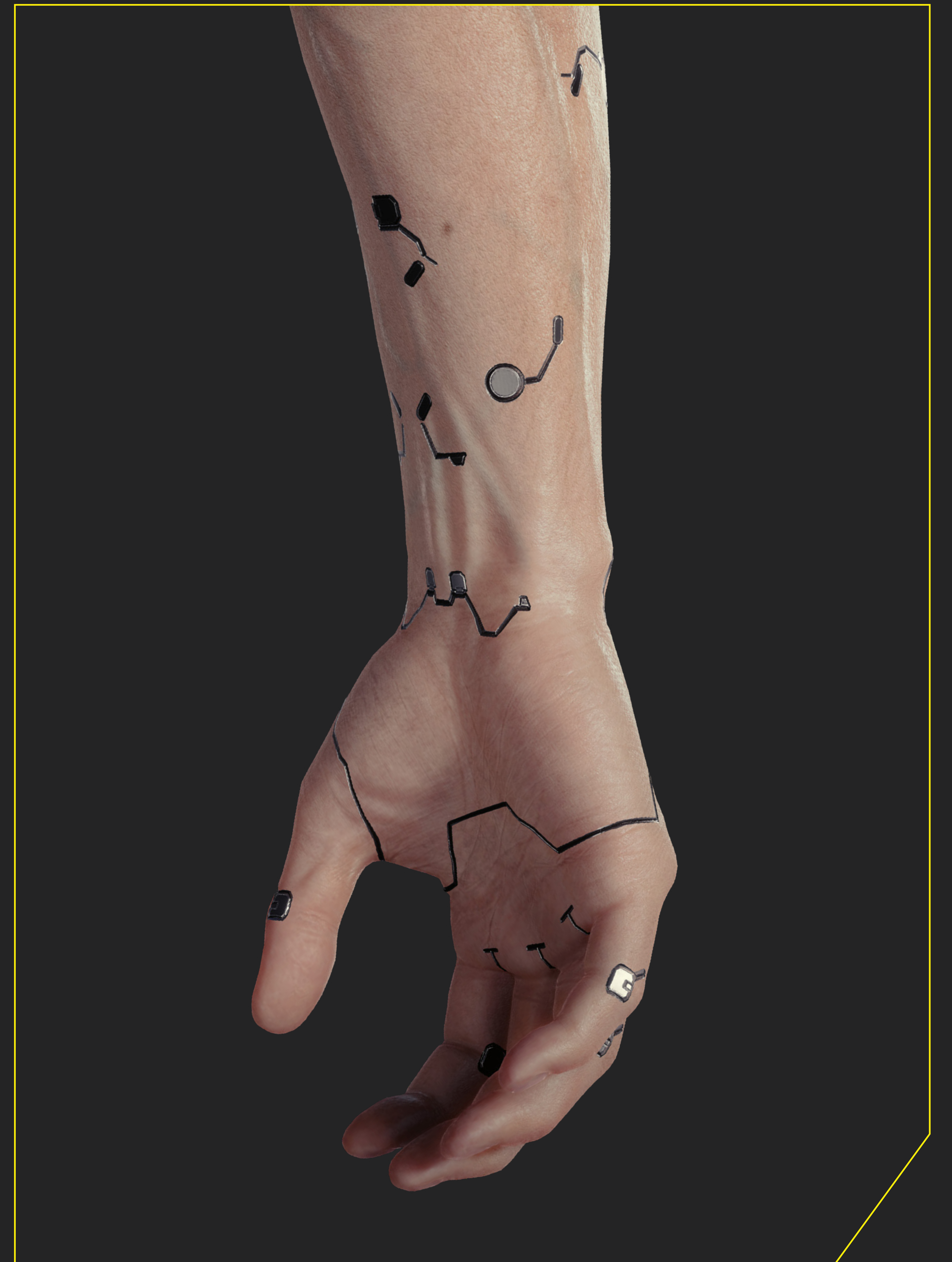
SHOES





HAND







WEAPONS

MANTIS BLADES

The Mantis Blades' thin, tapered shape – strongly resembling their namesake – allows you to slice and dice your enemies with swift, deadly slashes. Expertly designed to nestle underneath within your forearm not in use, they spring into action in a flash and give you the ability to leap at targets to deal massive damage.





FAN CONTENT GUIDELINES

We really appreciate all the work that our community puts into showing their love for our games and, to support you in this, we've put together [Fan Content Guidelines](#). Please remember to follow them while creating, wearing and showcasing your cosplay. In other words:

DO

- create cosplays inspired by our games
- show them off on your social media channels
- wear them to conventions, fairs, meet-ups, etc.

DO NOT

- create cosplays for sale
- use your cosplays to promote other companies/products
- claim you are officially sponsored by CD PROJEKT RED
- do anything offensive or illegal while wearing your cosplay



